

YERUN Launch Event

7 November 2017
European Parliament
Room PHS 4B001

Follow the discussions on Twitter
[@YERUN_EU](#)
[#YERUNLaunch](#)





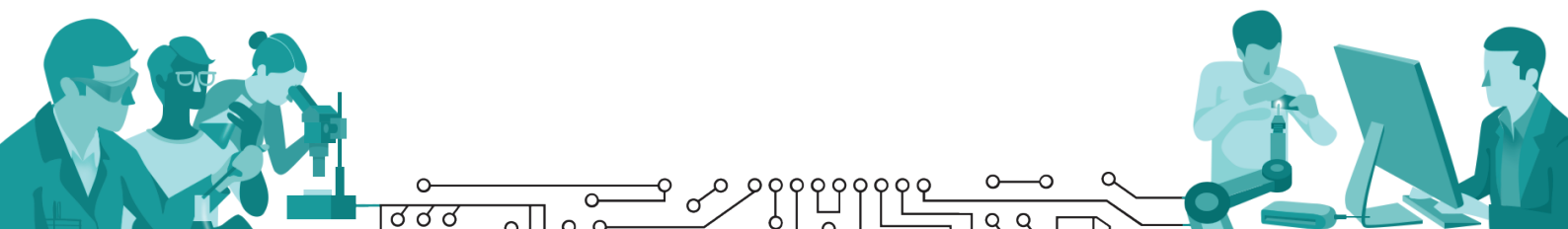
About

The Young European Research University Network (YERUN) strengthens and facilitates cooperation in the areas of scientific research, academic education and services of use to society among a cluster of highly-ranked young universities in Europe.

YERUN members are universities with a strong interdisciplinary character, of relatively small-scale and with a flexible structure, which facilitate innovation in their respective research and education fields. Indeed, the dynamic nature of YERUN universities allows to easily develop intersectoral collaborations with business, government and civil society (triple- and quadruple-helix).

The members of YERUN believe that an interdisciplinary, collaborative and open approach in research, education and innovation is needed to address pressing global challenges and to timely anticipate future ones. They commit to work internationally without forgetting their duty to promote a strong local, regional, national and European knowledge economy and to cocreate with citizens to empower them to actively participate in stronger and more resilient societies.

Our members





Yerun

Young European Research Universities

YERUN Launch Event

7 November 2017

European Parliament

Room PHS 4B001

8.00

Registration desk at info point (next to ASP building)

8.30

Breakfast will be served at the room

*The event is moderated by **Ms. Charlotte Geerdink**, from Charly Speaks*

9.00-09.20

Introduction and welcome speeches:

- **Prof. Juan Romo**, YERUN President, Rector University Carlos III Madrid
- **MEP Soledad Cabezón**, S&D, Rapporteur of the mid-term evaluation of H2020

9.20-10.30

From Horizon 2020 to FP9

- YERUN Position on FP9, **Prof. Tom Van Veen**, Maastricht University
- Commission's communication on H2020, **Mr. Keith Sequeira**, Senior adviser Com Moedas' cabinet

Q&A with audience

10.30-11.45

Added value of EU funded collaborative research – EU projects from YERUN members

- **Subhash Pokhrel**, EQUIPT, Brunel University London
- **Paul van Kampen**, SAILS, Dublin City University
- **Jörg Domaschka**, RECAP, Ulm University
- **Mónica Domínguez Bajo**, KRISTINA, University Pompeu Fabra
- **Tess Penne**, IMPROVE, Antwerp University
- **Renée van Vall**, **Iona Goldie-Scott** and **Artemis Rüstao**, NACCA, Maastricht University

Q&A with audience

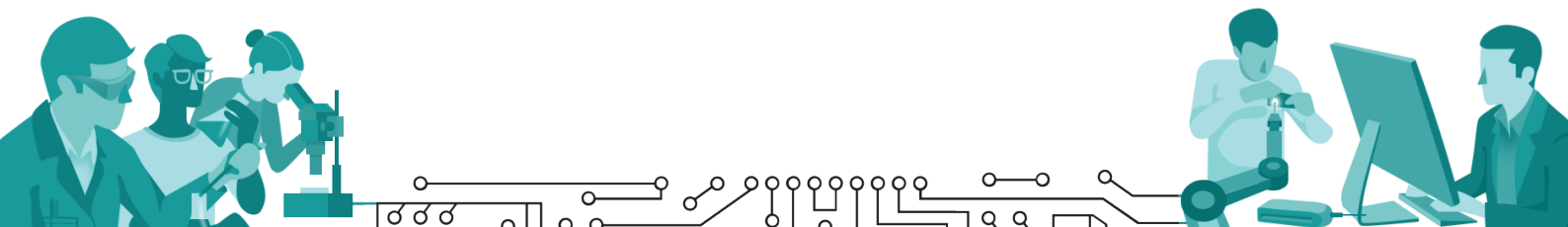
11.50-12.00

Concluding remarks

- **Prof Anthony Forster**, YERUN Executive Board, Vice Chancellor Essex University

Networking Lunch organised at the YERUN Office

Rue de Trône, 62 (6th floor)



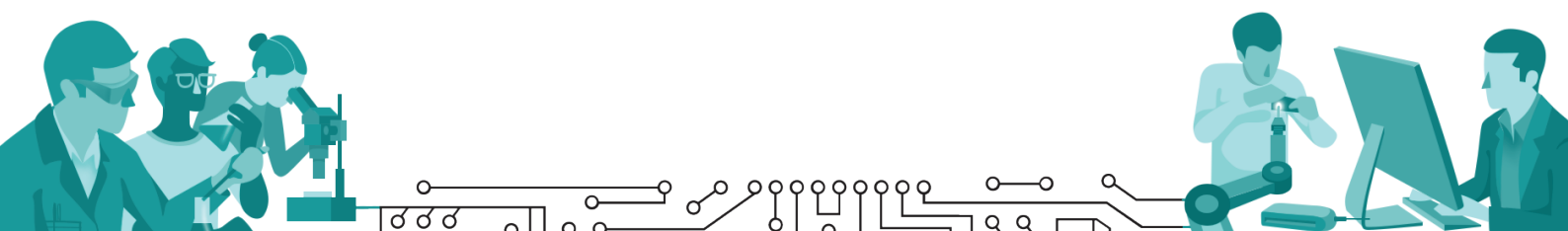
Where to collect your badge?

There will be a desk at the accreditation center, next to the **Altiero Spinelli** entrance.



Networking Lunch

Lunch will be organised at the **YERUN office**, 5 minutes walking-distance from the European Parliament.



Meet our Researchers



Subhash Pokhrel

Is a Reader in Health Economics and the Director of Health Sciences Division at Brunel University London (UK). He has led a multi-disciplinary, multi-centre collaboration of eleven European institutions to deliver the €2 million European Commission funded FP7 project, EQUIPT. His interests are around translation of research- exploring the pathways from evidence to policy. Together with his collaborators, he is currently investigating the extent to which economic evidence produced in one context can be transferable to others, for wider public health benefits.

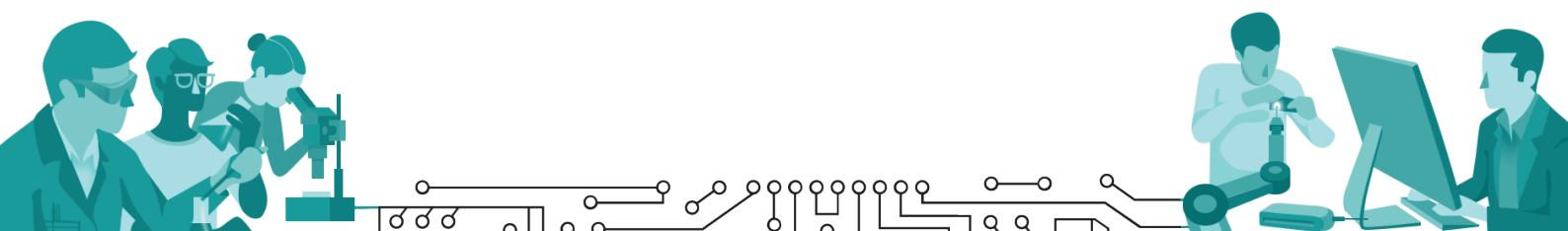
The European-study in quantifying utility of investment in protection from tobacco (EQUIPT) is a multi-disciplinary comparative effectiveness research (CER) funded by the European Commission's FP7 programme. This project aimed to provide European decision makers and wider stakeholders with bespoke information: How much would I get back for every Euro I spent on tobacco control programmes?



Paul van Kampen

Is a researcher within the School of Physical Sciences and the Centre for the Advancement of STEM Teaching and Learning (CASTeL) at Dublin City University. He is interested in how students can be helped to develop scientific understanding and reasoning, and an appreciation and enthusiasm for science. Most of Paul's teaching is with pre-service science teachers, and he focuses on helping teachers developing the attributes that allow them to teach in this way. He chairs the National Council for Curriculum and Assessment's Development Group for Junior Cycle Science.

Inquiry approaches make learning a hands-on, minds-on experience that is about asking questions and seeking and finding answers. The SAILS project has helped teachers become competent and confident with teaching science through inquiry and assessing their students' learning. More than 2500 science teachers in 12 countries participated in SAILS teacher education programmes, and the website www.sails-project.eu is a resource many teachers and students have benefitted from.





Jörg Domaschka

Received a PhD from Ulm University in 2013. That same year he returned to Ulm University after having worked as consultant in a start-up company for almost two years. Since then, he has been involved in national and European research projects. Particularly, he contributed to the FP7 projects PaaSage and CACTOS. Currently, he is the chief architect of Melodic and the project coordinator of RECAP.

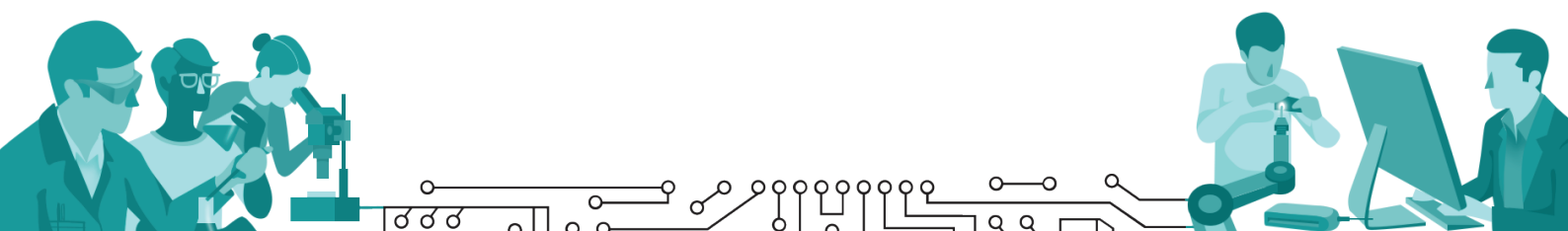
The growing spread of Internet-based services as well as the increasing uptake of IoT has been driving a dramatic change in society and daily life. Continuing to build this change on the state of the art of network and data centre operation will result in infrastructure overload due to an increasing demand on data transfer; and high latency when using these services. RECAP develops IT management tools that address these shortcomings: Being aware of load on both network and compute resources as well as the needs of the users and applications, RECAP is able to predict load and take measures to avoid and resolve bottlenecks in the infrastructure. These approaches increase the reliability of IT and multimedia services yielding better user experience. At the same time, it increases hardware utilisation leading to more resource-efficient and eco-friendly operation of both hardware and services.



Mónica Domínguez

Began her PhD in the TALN-UPF on the Information Structure-Prosody interface in 2013. In her research, she investigates how communicative structure is reflected by means of prosody in human speech and how to apply this correspondence to synthetic speech using a formal linguistic representation. Before that, she had previously worked in the industry several areas such as education, engineering and advertising for 12 years.

In Europe, migration is a tradition. The diverse nature of languages and cultures within the EU and from outside pose a challenge to communication and cultural integration, especially in the area of healthcare. Migrants often face an incrementally complex situation if they do not to speak the host language, if they are not acquainted with the culture of the resident country, and if they are unfamiliar with the health administrations of the country. This is particularly severe in the case of elderly people, and people with a low level of literacy, who have a limited access to information and communication technologies in the digital era. KRISTINA performs as a trusted information provision party and mediator in questions related to basic care and healthcare.





Tess Penne

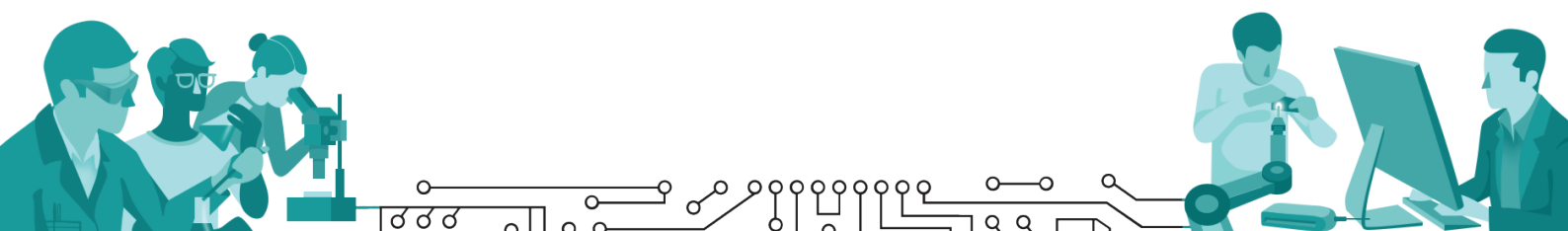
Graduated in 2012 as a Master in Sociology at the University of Ghent. Since 2013, she has been working as a researcher at the Herman Deleeck Centre for Social Policy at the University of Antwerp. Since 2015 she is PhD Fellow of the Research Foundation – Flanders. In her PhD she studies how reference budgets can contribute to a better understanding of the impact of publicly provided or subsidised goods and services on the adequacy of different kinds of welfare states in Europe, starting from the question what people need.

Poverty Reduction in Europe: Social Policy and Innovation (ImPRovE) has resulted in new insights into the impact of social policies on poverty and inequality in Europe, and the interactions between macro-level social policies and local projects of social innovation. Researchers in six European cities (Antwerp, Athens, Barcelona, Budapest, Helsinki and Milan) explored for the first time the feasibility to develop a common method to construct cross-nationally comparable reference budgets. The outcomes have been used to contextualise EU Social indicators, such as the at-risk-of-poverty indicator, to monitor the adequacy of social protection schemes in a comparative perspective and to facilitate cross-national learning in order to design more effective social policies.



Renée van de Vall

Is professor in Art & Media at the Faculty of Arts and Social Sciences of Maastricht University. Her research focuses on the phenomenology of spectatorship in contemporary art and on conservation theory and ethics in the context of contemporary art. She is project leader of the Marie Skłodowska-Curie Innovative Training Network New Approaches in the Conservation of Contemporary Art (NACCA).





Iona Goldie-Scot

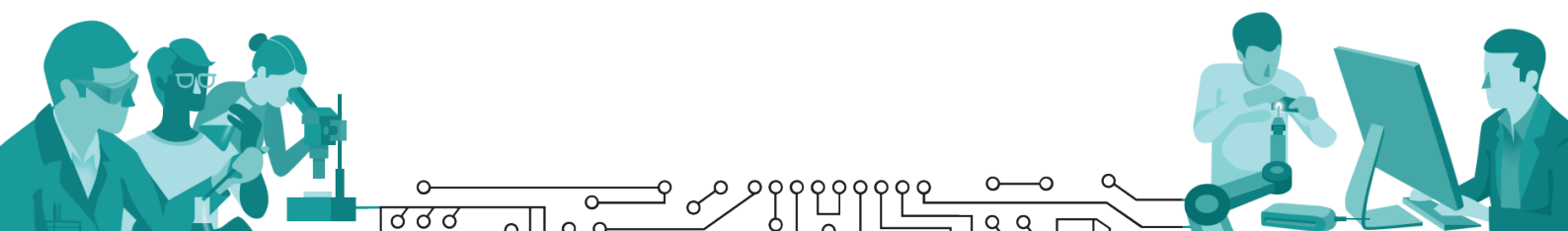
Is a second-year PhD candidate based at Maastricht University in the Netherlands within MSCA Innovative Training Network New Approaches in the Conservation of Contemporary Art (NACCA). She is currently undertaking fieldwork at the Stedelijk Museum in Amsterdam and has presented her doctoral research at public events in Amsterdam, London, Frankfurt and Glasgow.



Artemis Rüstau

Is a conservator specialised in the conservation of modern and contemporary art. She holds a degree in painting conservation from the HfBK Dresden and completed a postgraduate internship at the Hamilton Kerr Institute, Cambridge University. Prior to starting her PhD "Private Collections as Care-takers" as part of the Marie Skłodowska-Curie Innovative Training Network NACCA, she worked as a conservator at various museums including the Landesmuseum Hannover and the Kunsthaus Zürich.

In the EU funded Marie Skłodowska-Curie Innovative Training Network New Approaches in the Conservation of Contemporary Art (NACCA) 15 young researchers investigate how to preserve the ephemeral in order to safeguard the European artistic heritage of the future.





Yerun

Young European Research Universities

